



**CAST IRON METAL FACED  
GATE VALVE BS 5163 Series B  
+ EN1171:2002**

**WRAS APPROVED  
EPOXY COATED.**

**FLANGES TO BS 4504 PN 16**

**Use:**

Potable, Waste Water, Sewage

**Tests:**

Seat: 17.6 BAR

Body: 24 BAR

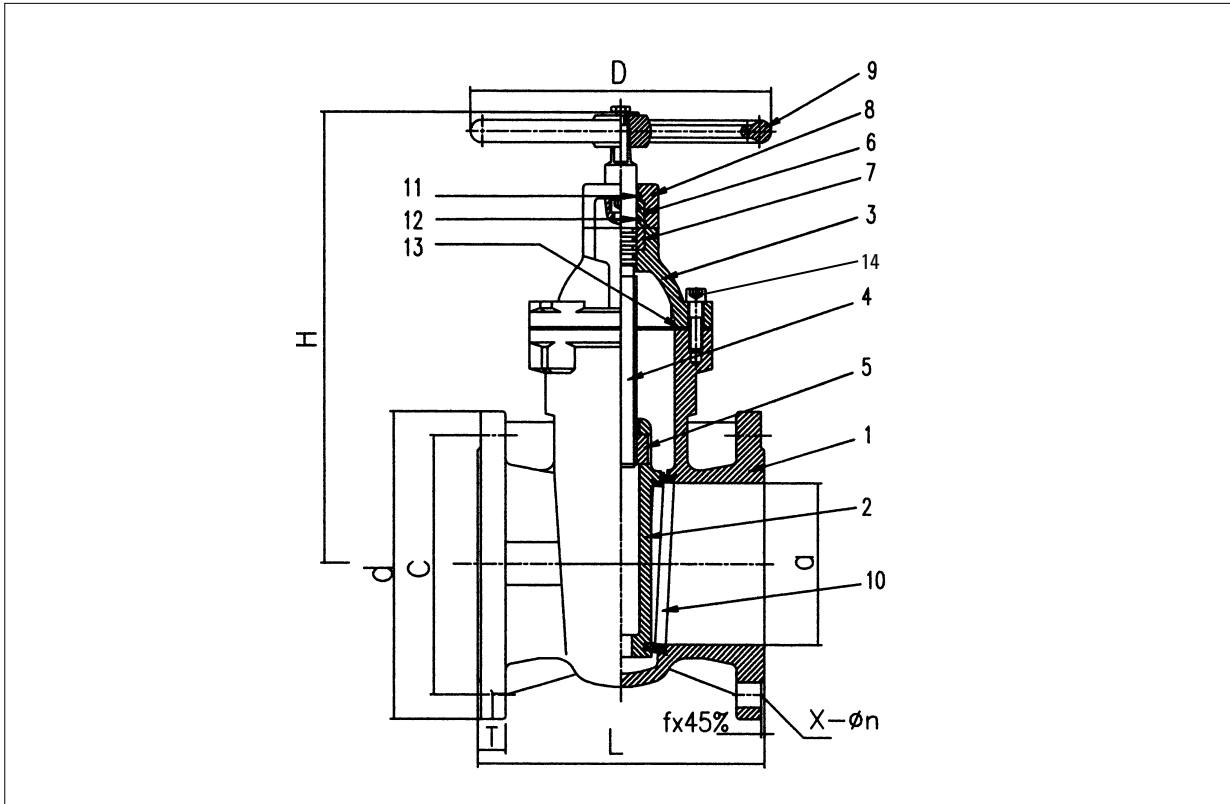
**Accessories:**

Cap top  
Actuator mounting ISO Flange  
Anti-clockwise close  
Chainwheel  
PN25 Version

**Materials:**

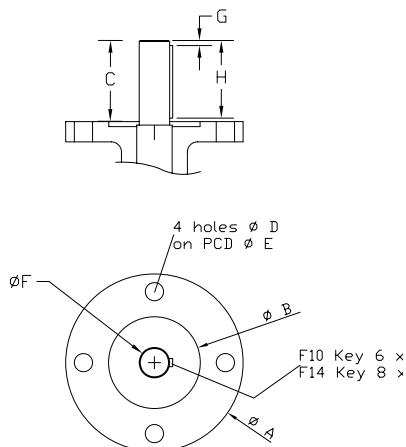
1 Body	Cast iron	BS 1452 Gr 220
2 Wedge	Ductile iron	BS 2789 500/7
3 Bonnet	Cast iron	BS 1452 Gr 220
4 Stem	Stainless steel	BS 970 431S29
5 Stem nut	Gunmetal	BS 1400 LG2
6 Sealing ring	Gunmetal	BS 1400 LG2
7 Holding ring	Gunmetal	BS 1400 LG2
8 Bonnet gland	Cast iron	BS 1452 Gr 220
9 Handwheel	Cast iron	BS 1452 Gr 220
10 Seat ring	Gunmetal	BS 1400 LG2
11 Wiper ring	EPDM rubber	
12 Stem seals	EPDM rubber	
13 Bonnet gasket	EPDM rubber	
14 Bolting	St. St.	GR 304

# CAST IRON METAL FACED GATE VALVE BS 5163 Series B



## Dimensions: mm

Dia	a	C	d	T	f	L	x-n	D	H	Weight
50	50	125	165	20	3	178	4-Ø19	180	272	14 KG
65	65	145	185	20	3	190	4-Ø19	180	308	19 KG
80	80	160	200	22	3	203	8-Ø19	204	345	28 KG
100	100	180	220	24	3	229	8-Ø23	280	370	32 KG
150	150	240	285	26	3	267	8-Ø23	320	490	60 KG
200	200	295	340	30	3	292	12-Ø23	320	570	95 KG
250	250	355	405	32	3	330	12-Ø28	360	675	143 KG
300	300	410	460	32	4	356	12-Ø28	450	780	206 KG



valve dia	Dimensions							
	A	B	C	D	E	F	G	H
80								
100	125	70.5	51	12	102	20	5	45
150								
200								
250	175	90.5	51	18	140	30	5	45
300								

dimensions are to ISO 5210/3 1982  
 80 to 150mm are F10 type B3  
 200 to 300mm are F14 type B3

Size	Torque (N.m.)	No of turns
50mm/2"	60	15.5
65mm/2.5"	68	15.5
80mm/3"	75	8
100mm/4"	100	9.5
125mm/5"	122	12
150mm/6"	149	14
200mm/8"	200	18.5
250mm/10"	250	22
300mm/12"	300	27

Adaption for actuator mounting

Operating torque at 16 barg